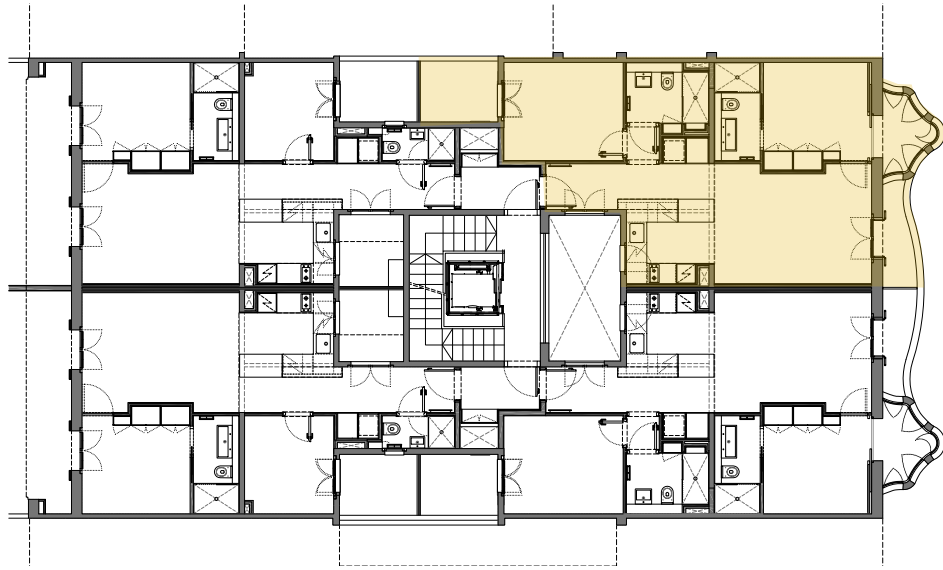


# ARCHITECTURE PLANS CASA ALESAN PSJ110

## MAIN FLOOR 1A



### MAIN FLOOR 1A

1	Foyer	3,42
2	Living-dining room-kitchen	26,40
3	Hallway	1,14
4	Room	10,07
5	Office	10,90
6	Bathroom 1	4,11
7	Bathroom 2	4,57
8	Laundry room	1,15
9	Tribune	3,35
10	Balcony	2,72
11	Patio	4,41

### USEFUL SURFACES

INTERIOR	65,13
EXTERIOR	7,13
BUILT	79,24

SURFACES in m2

